

COMUNE DI SAN CASCIANO VAL DI PESA

PIANO ATTUATIVO PER LA ZONA IDENTIFICATA DAL R.U.C.
DI SAN CASCIANO V.P. COME "ARTU 07"

Ubicazione: Via Kennedy, San Casciano Val di Pesa

Intestatario:

Immobiliare Val di Pesa
di Boretti Paolo & C. s.a.s.
Legale Rap.: Sig. Boretti Paolo

Progettisti:

Ing. Fabio Corsinovi

Geom. Massimiliano Malanchi

Collaboratori:

Arch. Francesca Bacci

Geom. Irene Faggioli

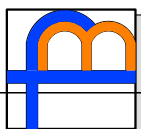
TAV. 21/a

ABACO ALLOGGI - ATRU 07, BLOCCO C

Data: 21/12/2018

TAVOLA INTEGRATIVA
in adeguamento alla VAR. di cui alla DELIBERA n° 54 del 27/09/18

STUDIO MALANCHI e FAGGIOLI ASSOCIATI



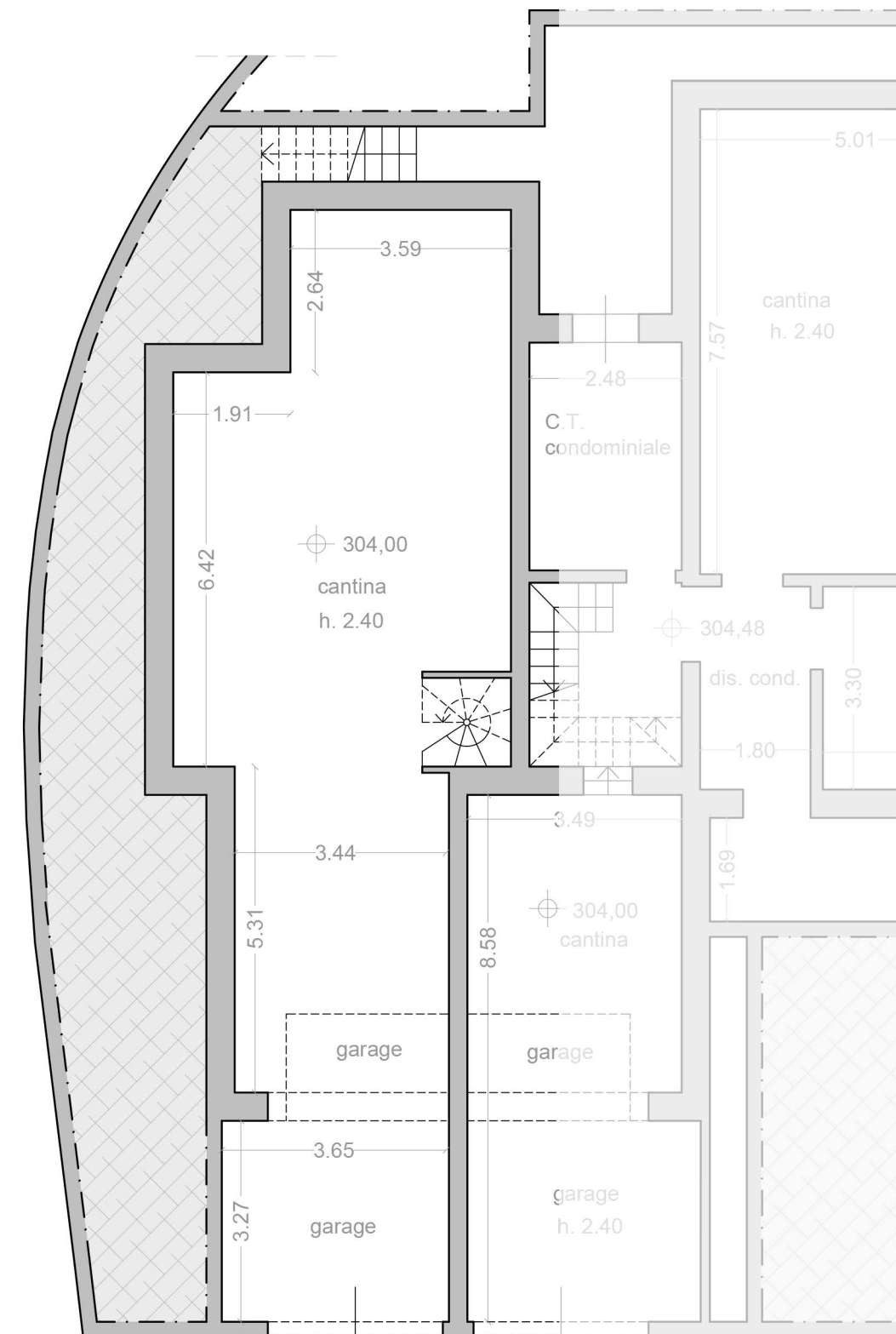
di Massimiliano Malanchi e Irene Faggioli

Via 2 Giugno n° 28, località Cerbaia V.P. -FI- Tel. 055/825293 Fax 055/8259849

Appartamento "A" _ Piano terra: Edilizia convenzionata (EC)

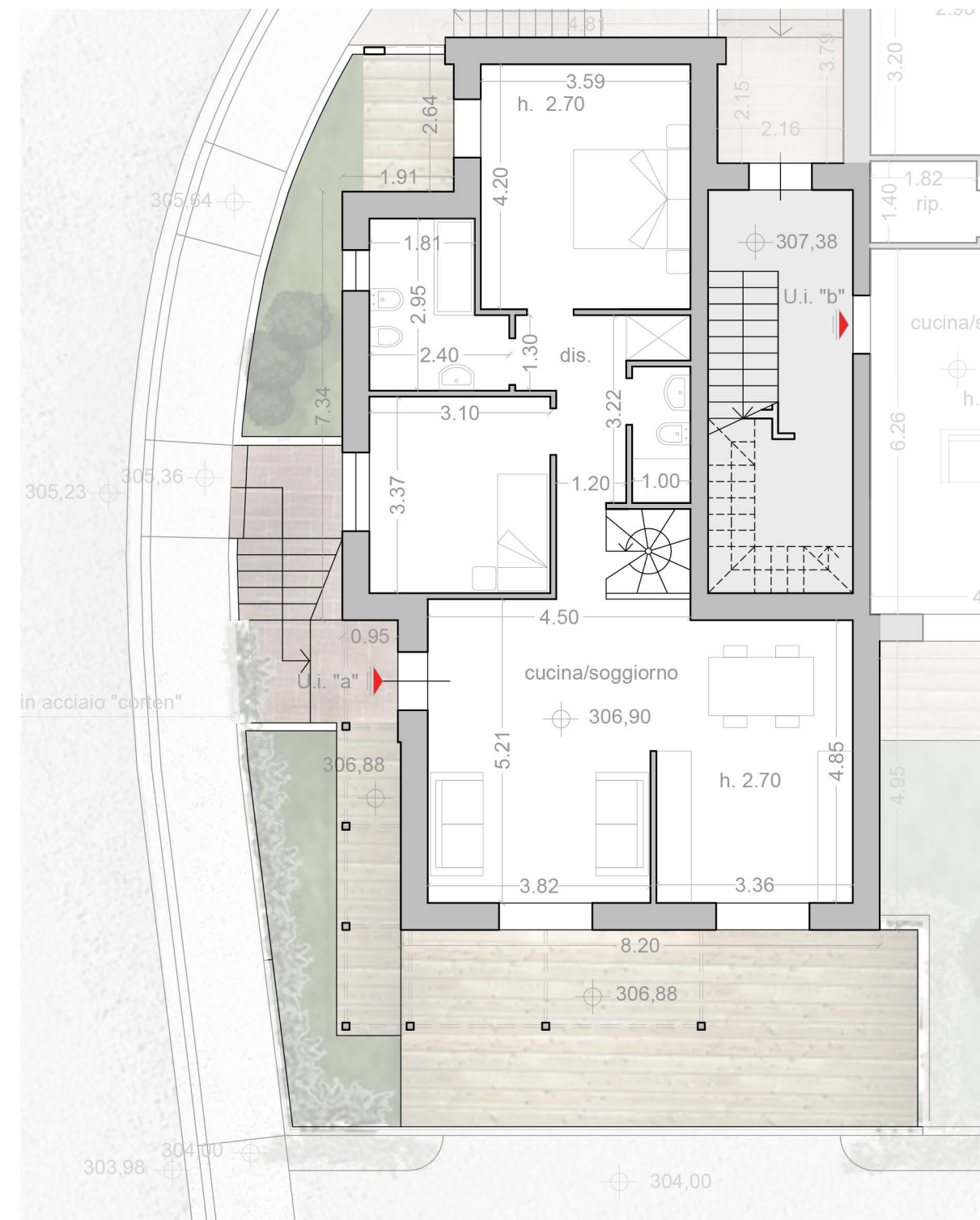
Garage e Cantina

Superficie netta GARAGE: 16,73 mq
Superficie netta CANTINA: 57,78 mq



Appartamento

Superficie netta: 79,44 mq
Loggia: 3,62 mq
Giardino: 57,58 mq

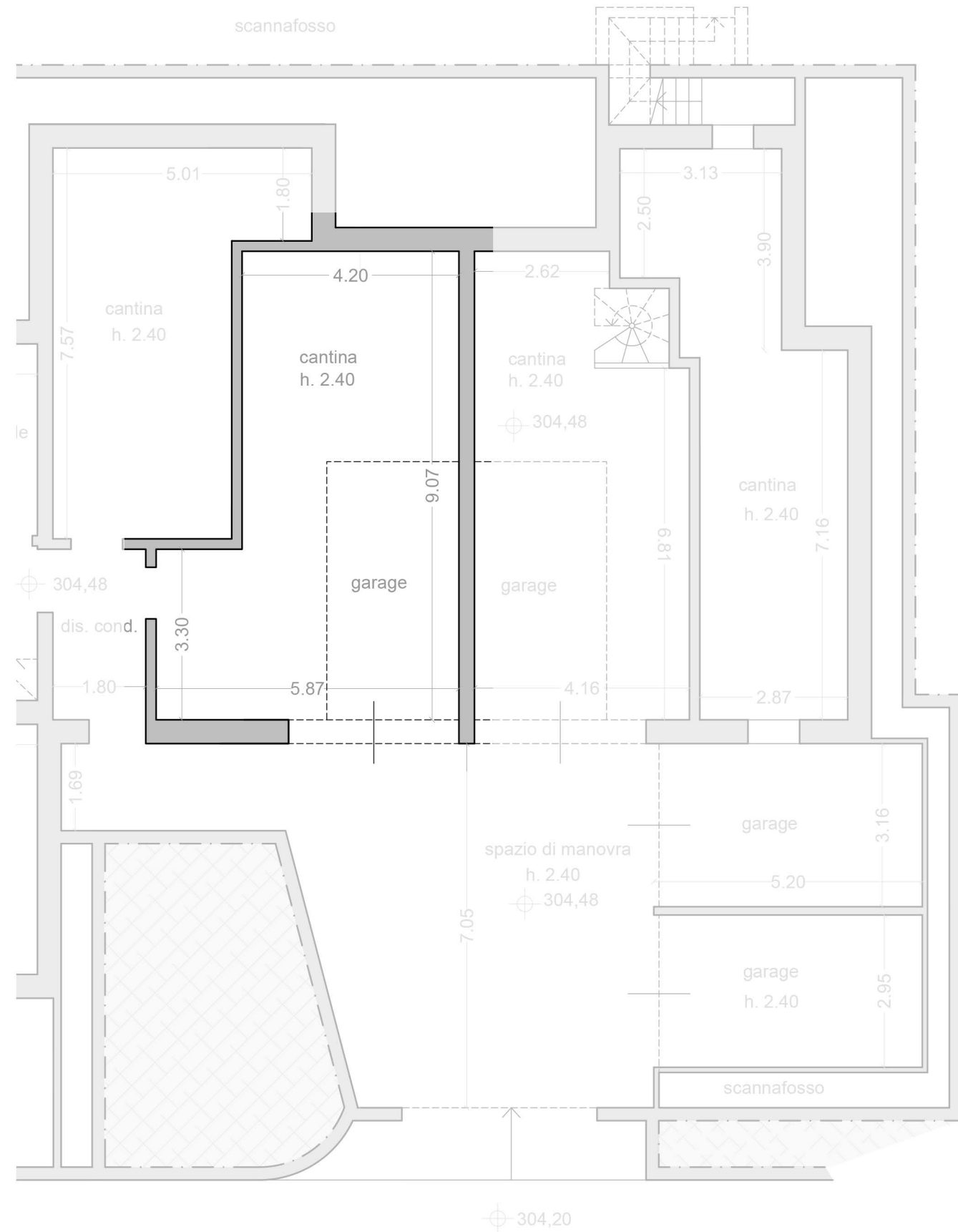


Appartamento "B" _Piano terra:

Edilizia convenzionata (EC)

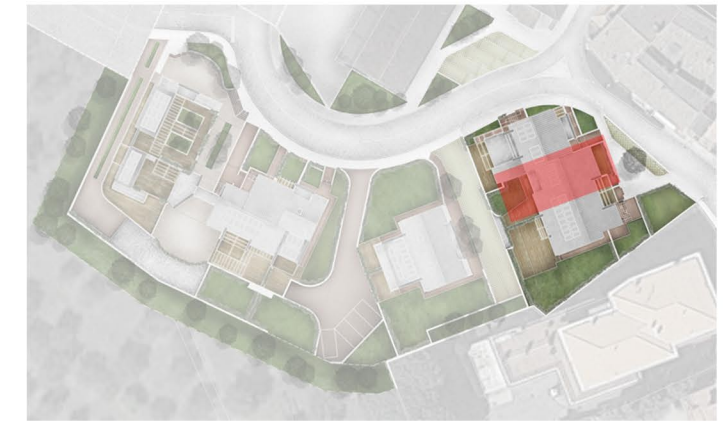
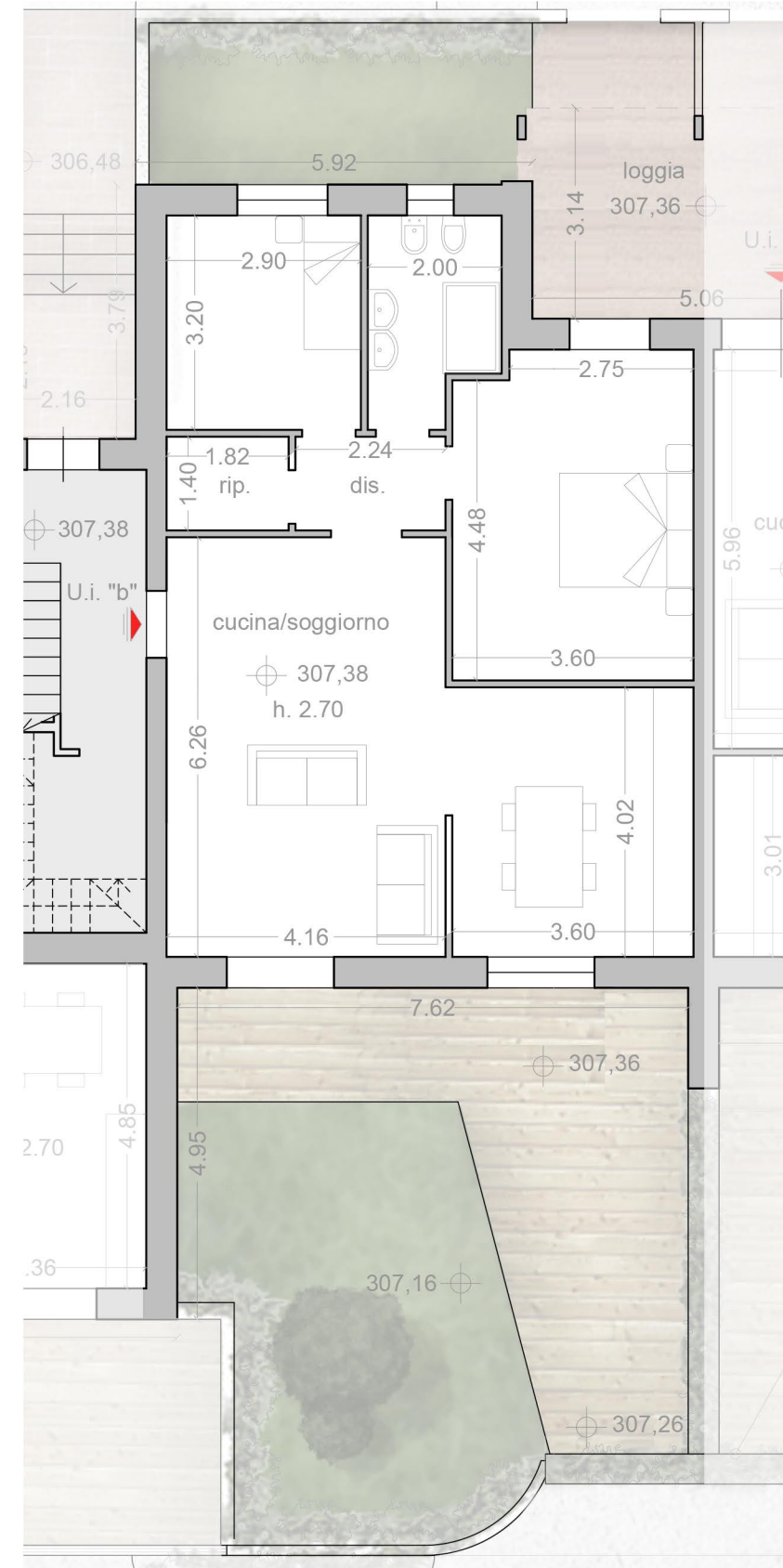
Garage e Cantina

Superficie netta GARAGE: 12,80 mq
Superficie netta CANTINA: 30,90 mq



Appartamento

Superficie netta: 78,91 mq
Loggia: 7,80 mq
Giardino: 79,12 mq



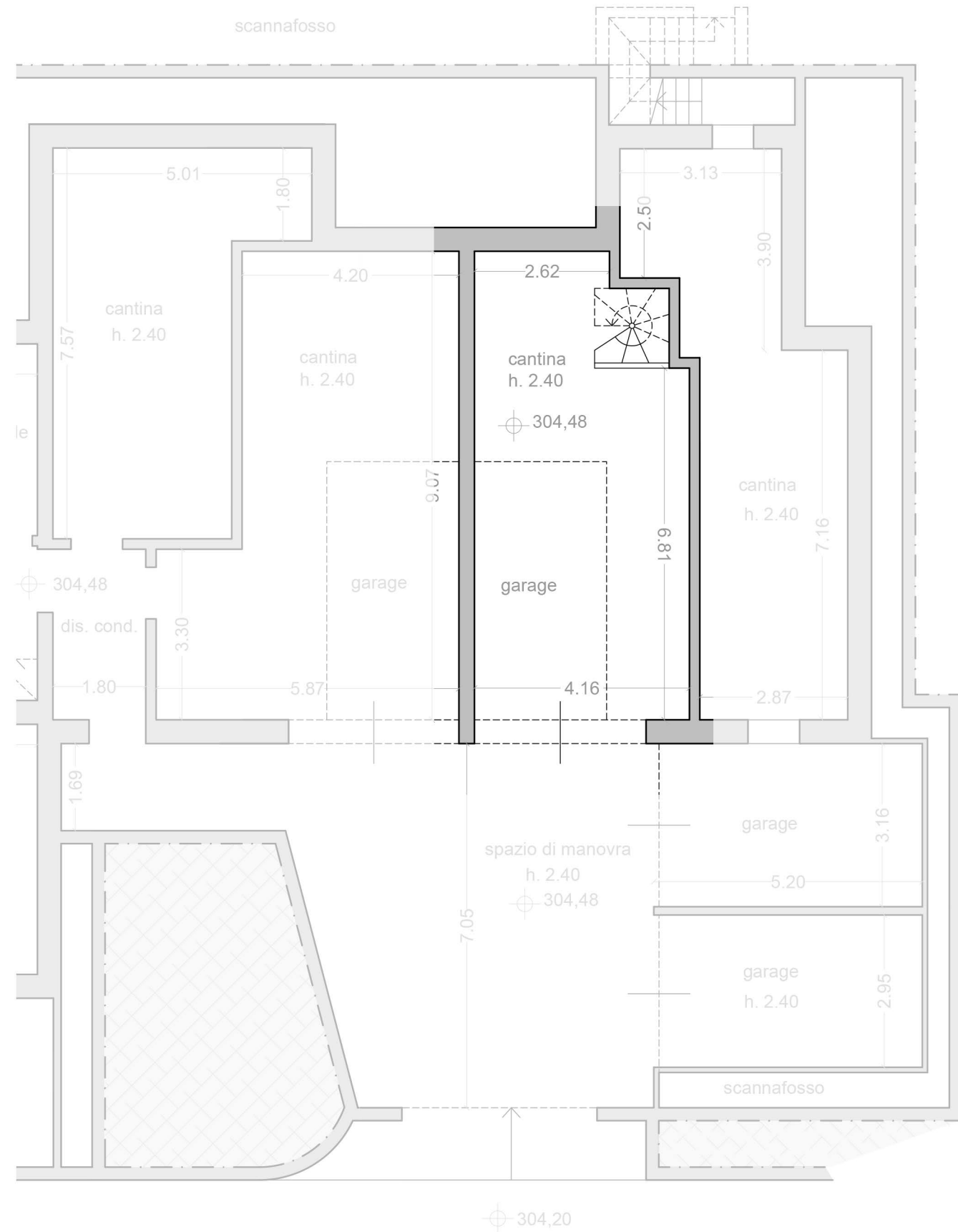
Appartamento "C" _Piano terra:

Housing sociale (HS)

Garage e Cantina

Superficie netta GARAGE: 12,80 mq

Superficie netta CANTINA: 23,30 mq

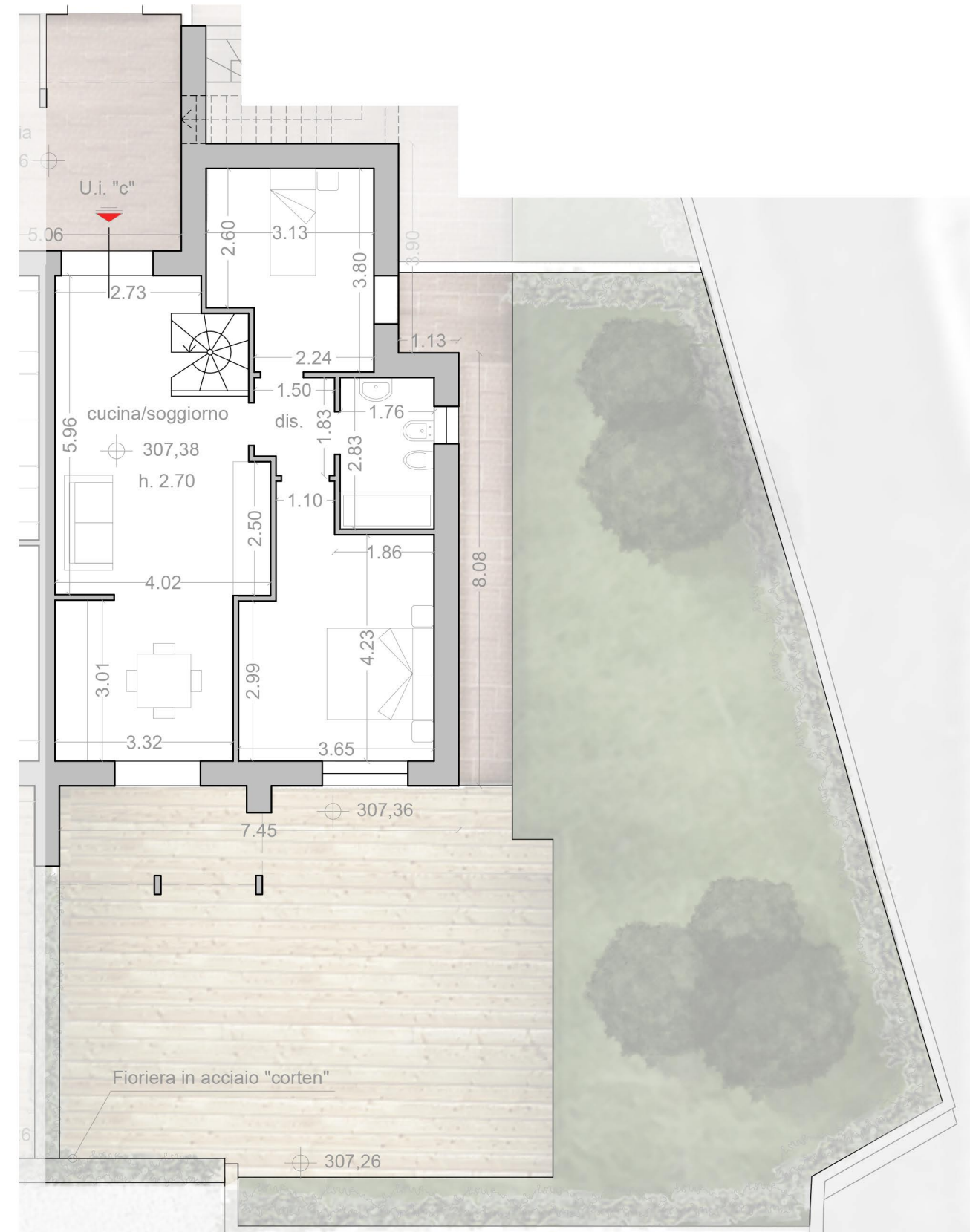
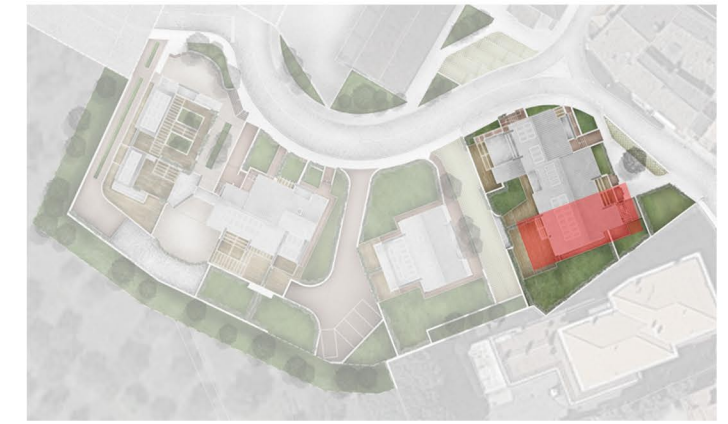


Appartamento

Superficie netta: 66,31 mq

Logge: 15,80 mq

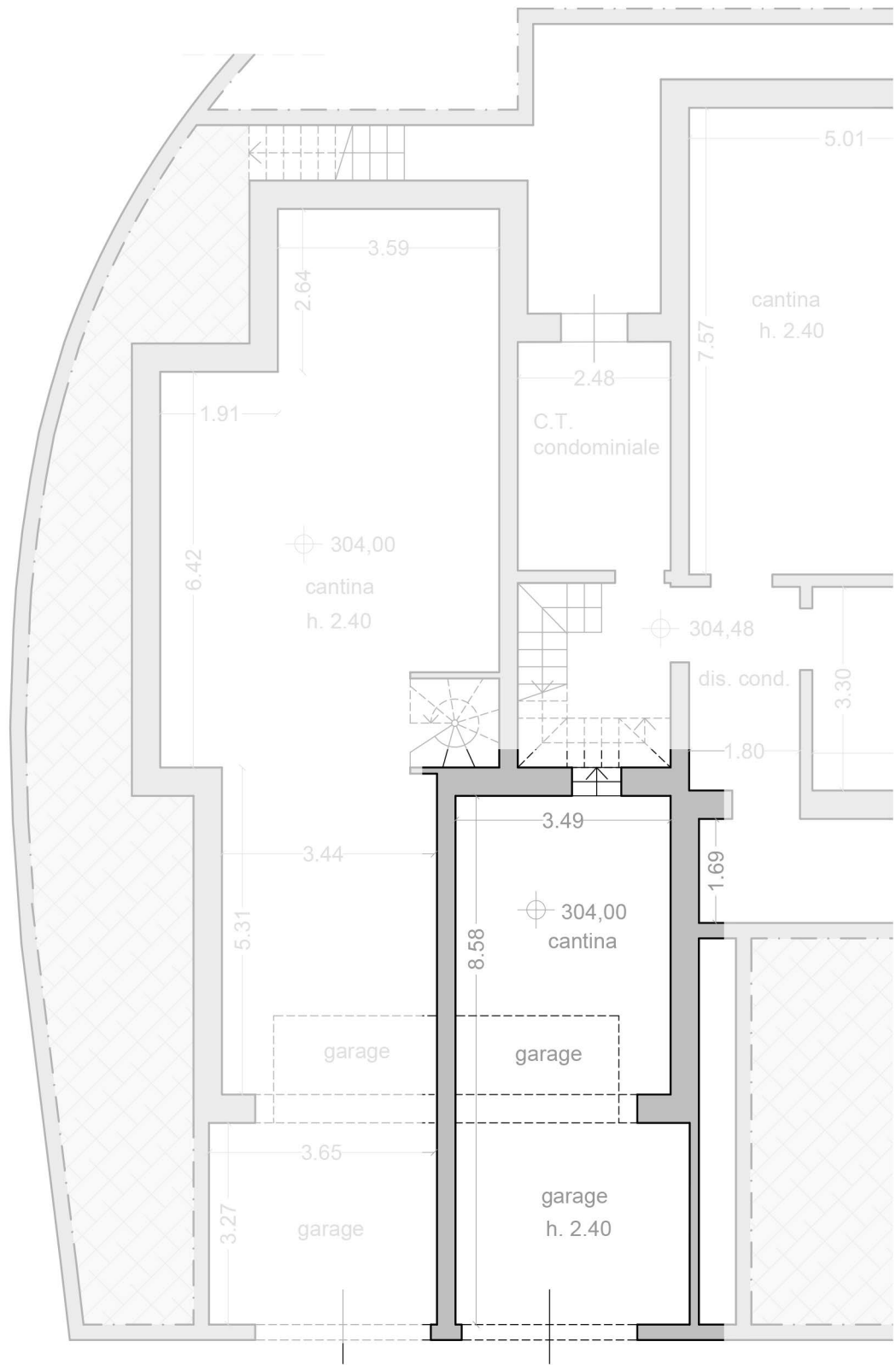
Giardino: 183,00 mq



Appartamento "E" _Piano primo: Edilizia convenzionata (EC)

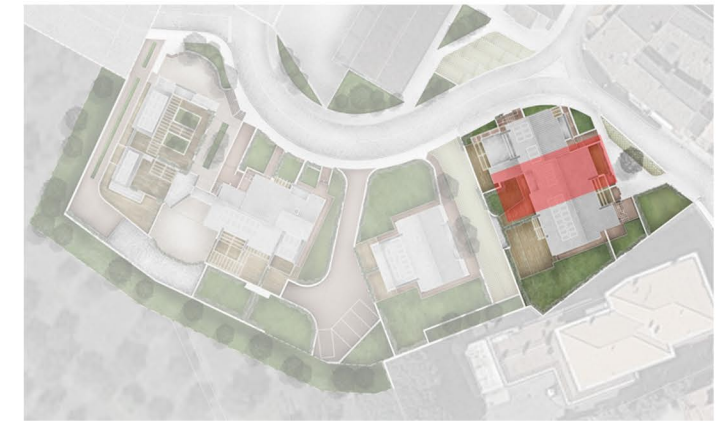
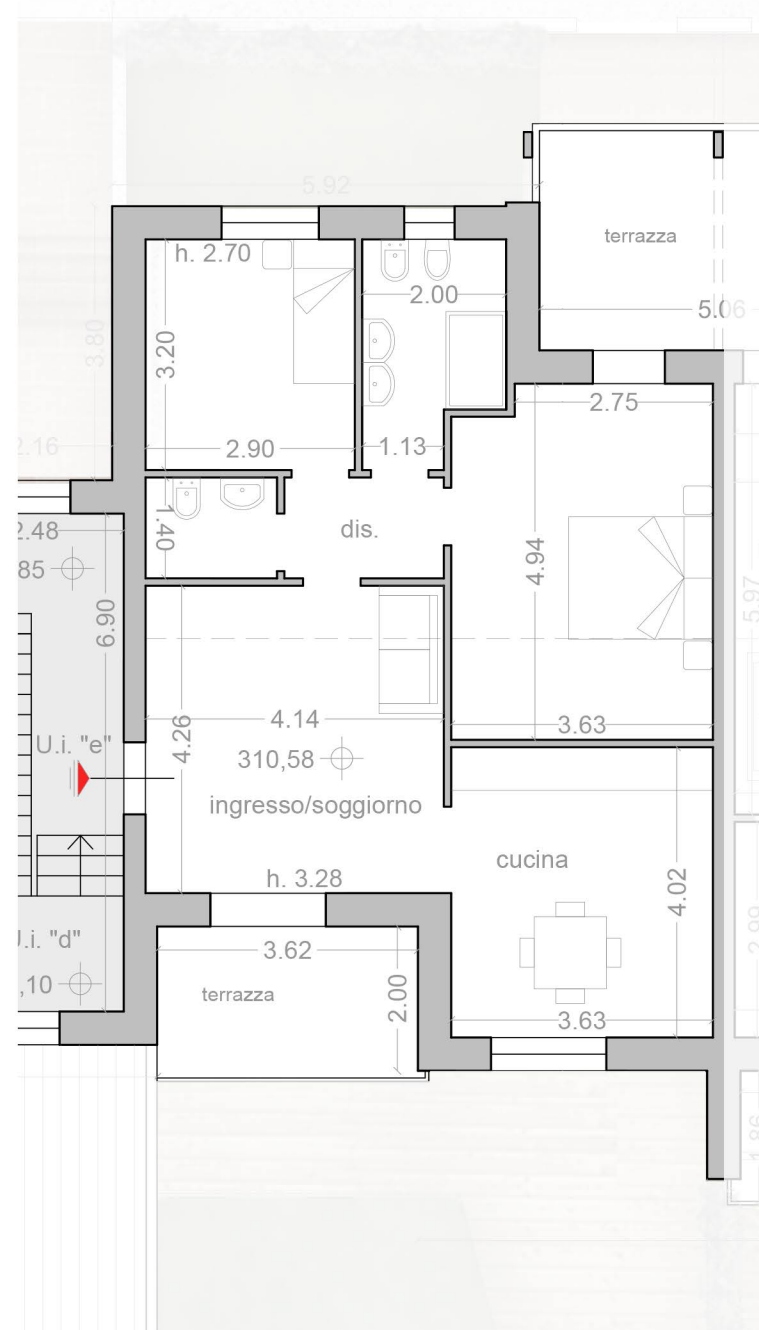
Garage e Cantina

Superficie netta GARAGE: 17,00 mq
Superficie netta CANTINA: 13,66 mq



Appartamento

Superficie netta: 70,26 mq
Terrazze: 15,60 mq



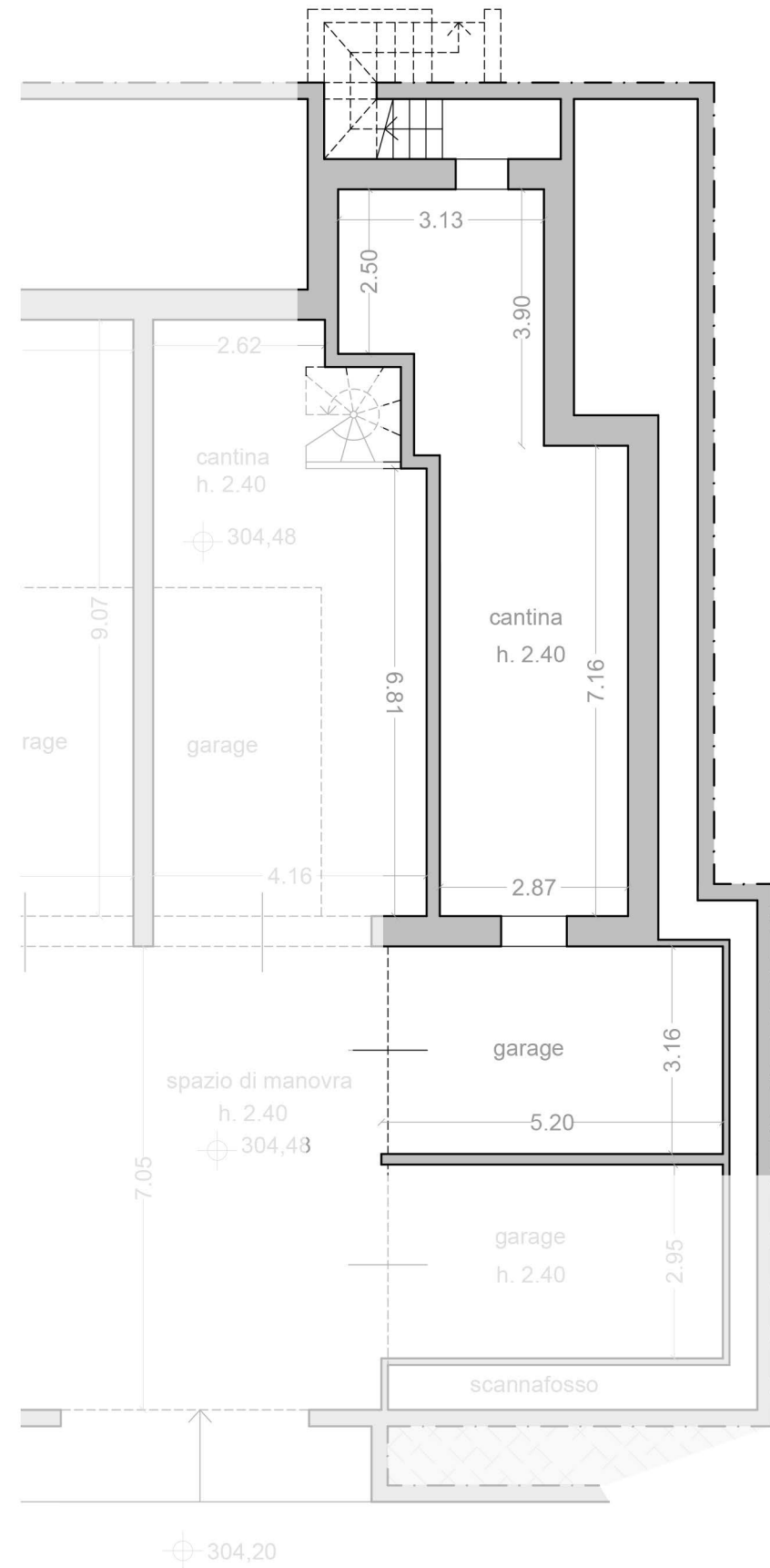
Appartamento "F" _Piano primo:

Housing sociale (HS)

Garage e Cantina

Superficie netta GARAGE: 16,12 mq

Superficie netta CANTINA: 31,20 mq



Appartamento

Superficie netta: 66,40 mq

Terrazze: 14,93 mq

Giardino: 38,43 mq

